



PEYLAA
PHUKET

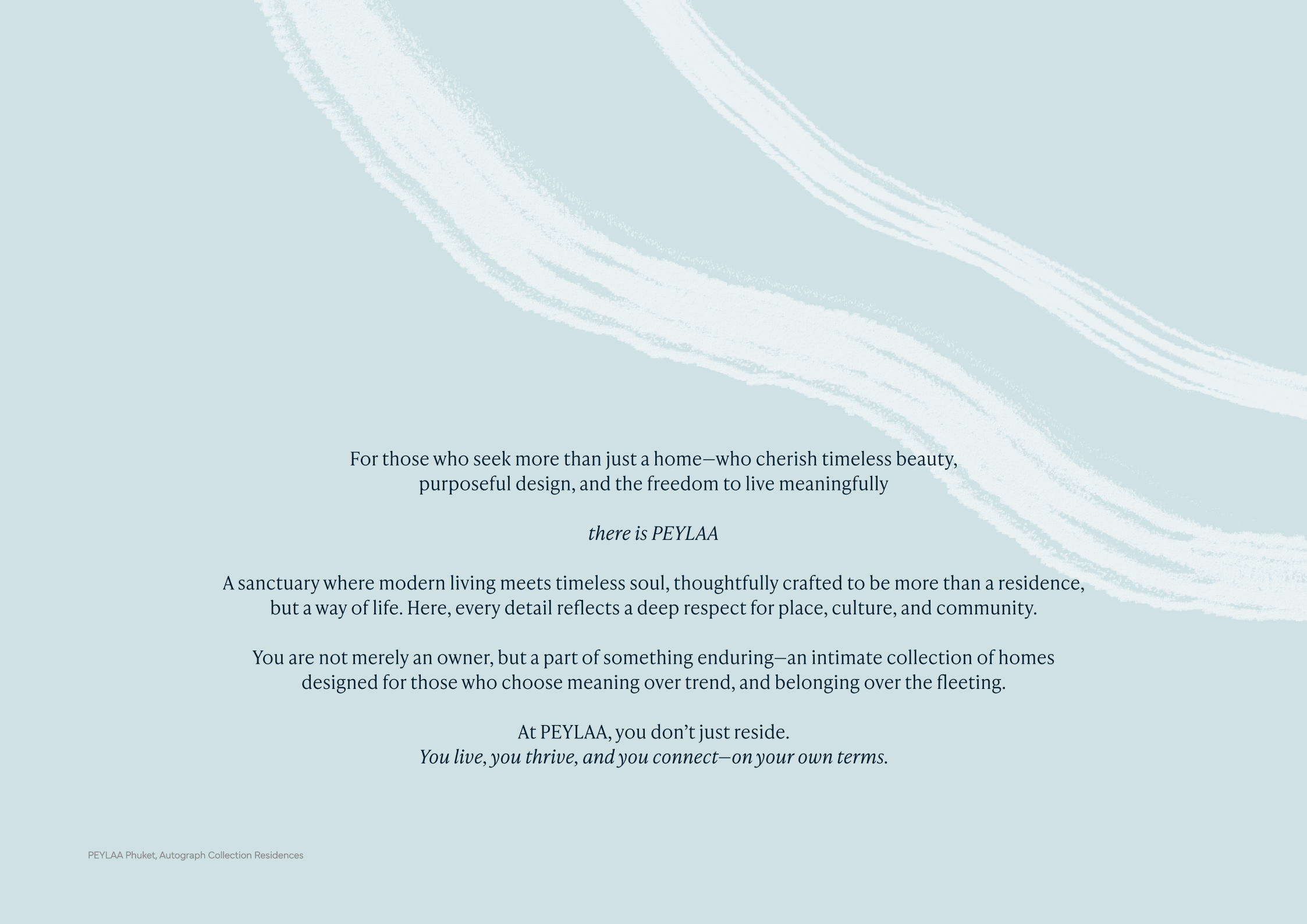
AUTOGRAPH COLLECTION®
RESIDENCES





Exactly Like Nothing Else.

Part of Marriott International's Autograph Collection portfolio,
PEYLAA Phuket, Autograph Collection Residences a harmonious blend of artistic
design, distinctive character, and an emphasis on well-being
— *all elevated by the privilege of exceptional hospitality.*



For those who seek more than just a home—who cherish timeless beauty,
purposeful design, and the freedom to live meaningfully

there is PEYLAA

A sanctuary where modern living meets timeless soul, thoughtfully crafted to be more than a residence,
but a way of life. Here, every detail reflects a deep respect for place, culture, and community.

You are not merely an owner, but a part of something enduring—an intimate collection of homes
designed for those who choose meaning over trend, and belonging over the fleeting.

At PEYLAA, you don't just reside.
You live, you thrive, and you connect—on your own terms.

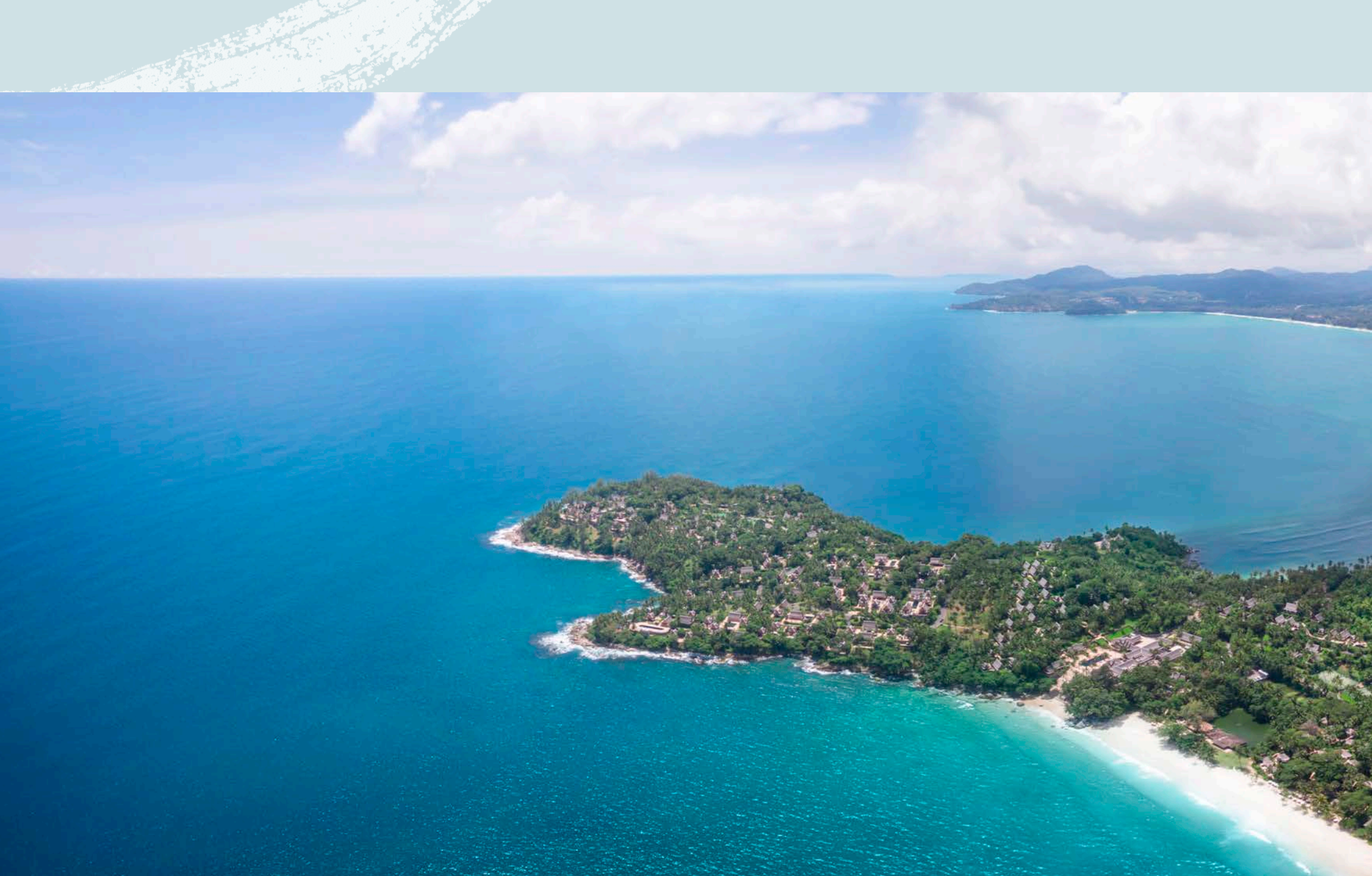


A full-page background image of a beach. The top half shows turquoise water with gentle ripples. The bottom half shows a wide, golden sand beach. A thin line of white surf separates the water from the sand in the middle. The overall mood is peaceful and natural.

Live In The Moment

Timeless, Natural Beauty
Unfold at Your Own Pace



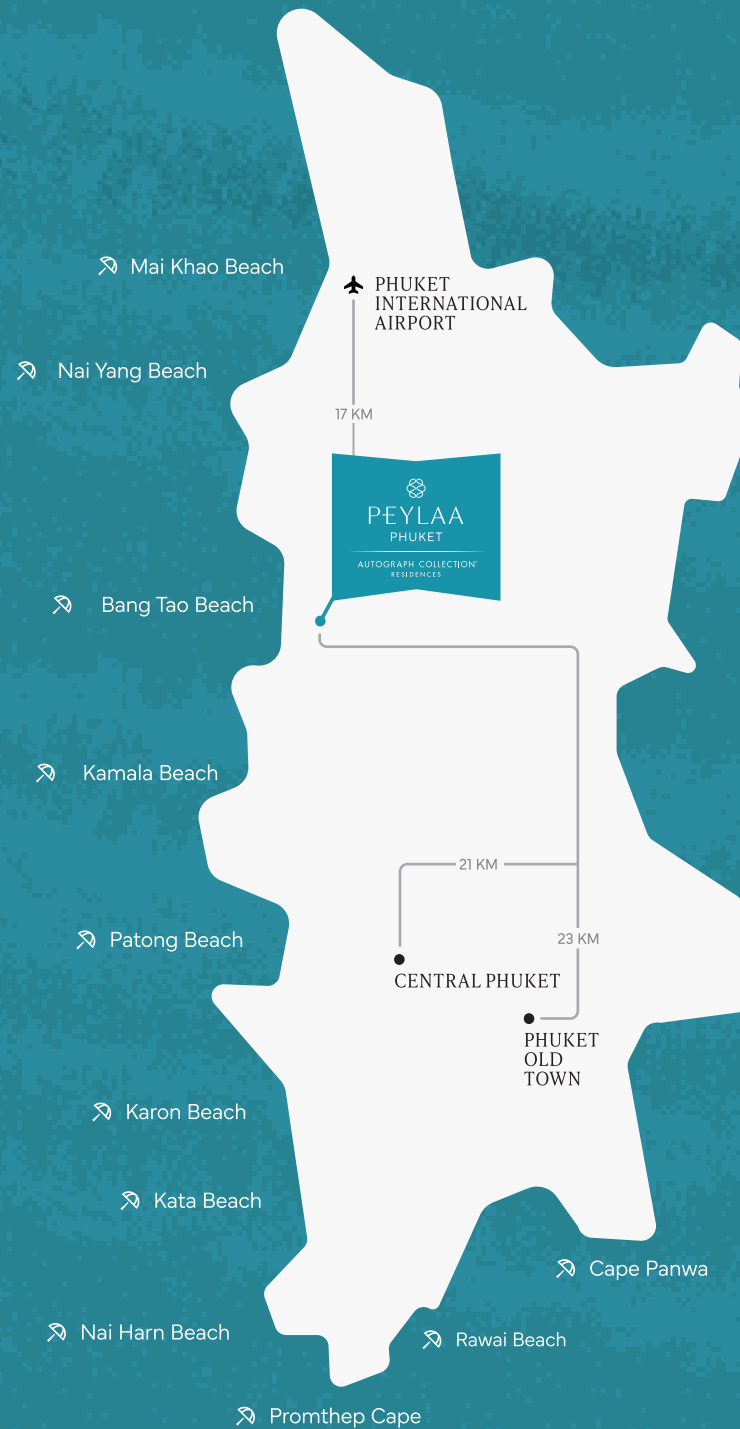






Phuket

The Andaman *Paradise*





ANDAMAN SEA

↑ NAI YANG BEACH
LAGUNA BEACH
LA PHANG BEACH
BANG TAO BEACH

↓ KAMALA BEACH
SURIN BEACH

Choeng Thale Rd.

Pasak Khetnand Rd.

Bangkok-Chengdu Rd.

Soi Choeng Thale

↑ UWC INTERNATIONAL SCHOOL

↑ PHUKET INTERNATIONAL AIRPORT

Soi Pasak 1

LAGUNA GOLF COURSE

OASIS SPA (TROPICAL RETREAT SPA)

BANGKOK HOSPITAL CLINIC BANGTAO

PEYLAA PHUKET
AUTOGRAPH COLLECTION® RESIDENCES

VITALLIFE SCENTIFIC WELLNESS CENTER PHUKET

BOAT GALLERIA

SIAMSPORTPRO TENNIS ACADEMY

BOAT AVENUE PARK & PLAYGROUND

MAYA BEACH CLUB PHUKET

CATCH BEACH CLUB

CARPE DIEM BEACH CLUB PHUKET

VILLA MARKET - BOAT AVENUE PHUKET (LAGUNA)

BLUE TREE WATER PARK & LIFESTYLE AVENUE

PORTO DE PHUKET

CHOENG THALE TEMPLE

Si Sunthon Rd.

BANG TAO NIGHT MARKET

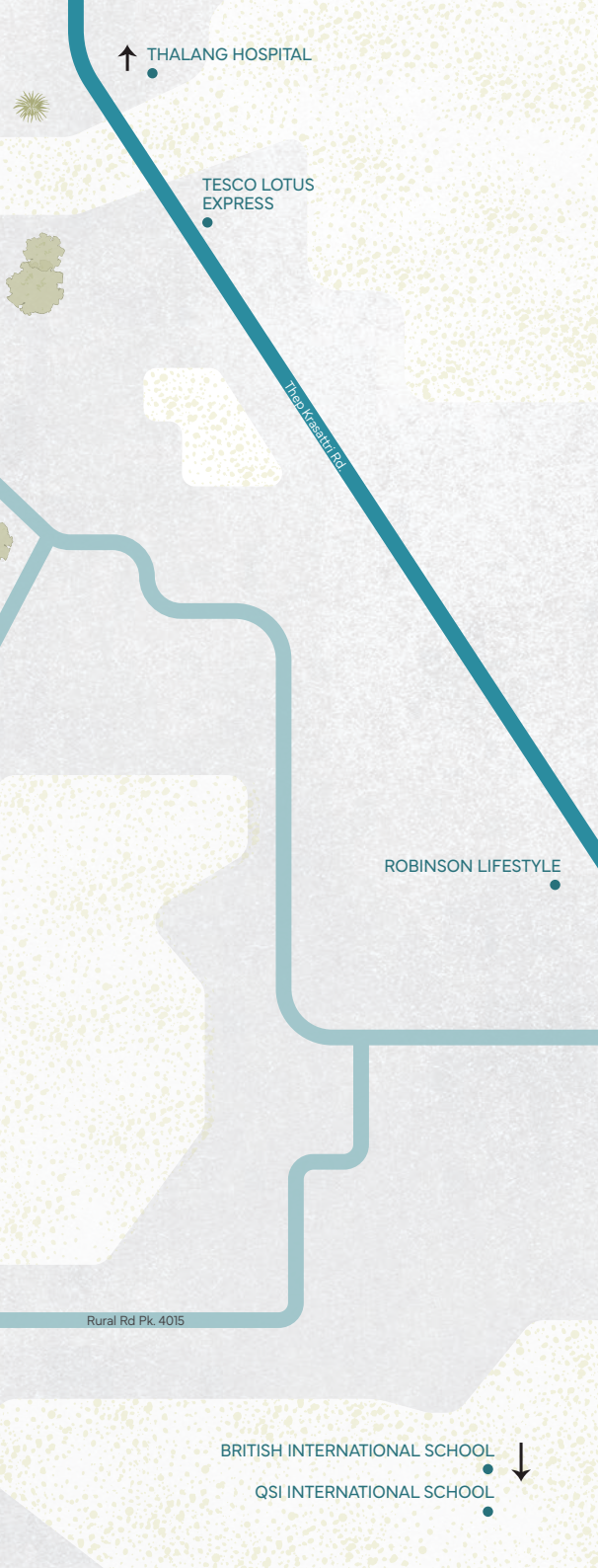
Soi Bang Tao 2.

Soi Bang Tao 4.

ELEPHANT CARE PARK PHUKET NAI DEE

ELEPHANT WILDLIFE SANCTUARY PHUKET

HEADSTART INTERNATIONAL SCHOOL



LOCATION HIGHLIGHTS

In The Heart Of Bang Tao

Transportation

- Phuket International Airport 17 KM

Education

- HeadStart International School 6.1 KM
- UWC International School 13 KM
- British International School 14 KM
- QSI International School 19 KM

Shopping

- Boat Galleria 0.3 KM
- Boat Avenue Park & Playground 0.4 KM
- Villa Market - Boat Avenue Phuket (Laguna) 1 KM
- Porto De Phuket 1.6 KM
- Robinson Lifestyle 9.5 KM
- Local Markets for Fresh Produce 3.6 KM
- Tesco Lotus Express 3.5 KM

Hospitals

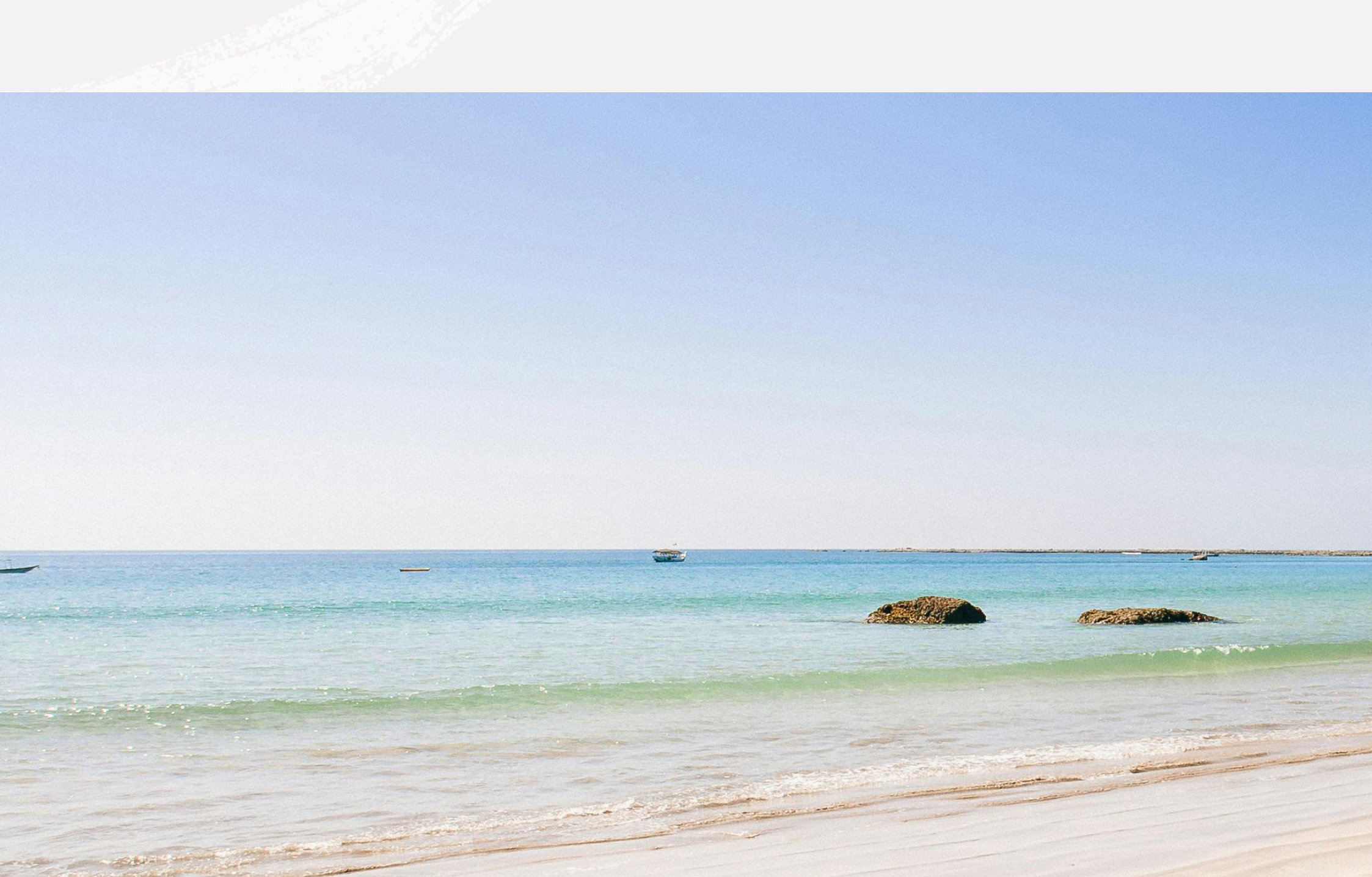
- Bangkok Hospital Clinic Bangtao 2.4 KM
- Thalang Hospital 7.4 KM

Nearby Beaches

- Bang Tao Beach 1.9 KM
- Surin Beach 6.6 KM
- Kamala Beach 9.1 KM
- Nai Yang Beach 16 KM

Recreation & Lifestyle

- Laguna Golf Course 3.8 KM
- SiamSportPro Tennis Academy 4.2 KM
- Blue Tree Water Park & Lifestyle Avenue 3.6 KM





Bang Tao

Relaxed yet Refined

As Phuket's second longest beach, Bang Tao gracefully blends tranquil coastal living with refined sophistication along its pristine 6-kilometer shoreline.

At the northern end, peaceful, untouched shores welcome early risers with the sight of local fishermen launching longtail boats at dawn—setting the scene for quiet retreats and authentic island moments.

Meanwhile, the southern stretch hums with just the right amount of energy—upscale beach clubs, world-class dining, and luxury resorts offer a refined backdrop that complements the island's natural beauty.

From serene morning strolls on quiet sands to sunset cocktails at chic waterfront venues, live a life against a backdrop of turquoise waters and the dramatic glow of Andaman Sea sunsets that make

Bang Tao truly exceptional.





*Image intended for marketing purposes only.

PEYLAA Phuket, Autograph Collection Residences

Project Information

Land Area

- Residential Plot : 10-1-94.4 rai
- Commercial Plot : 0-2-69 rai (approximate)
- Hotel Plot: 1-1-39 rai (approximate)

Residence Type

- 1 BR : 45 sq. m.
- 2 BR : 83 – 86 sq. m.
- 3 BR : 129 sq. m.

Key Figures

- 3 Residential Buildings
- 7 Floors / Building
- Total 408 Residences
- 1 Main Arrival Lobby
- 191 Cars Parking Spaces
- 54 Motorbike Parking Spaces

Target Completion

- Residences to be completed in Q4 2027*
- Retail to be completed within 2026*
- Hotel to be completed within 2030*



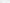

*The development timeline and specifications presented are based on current planning and are subject to change without prior notice. The developer reserves the right to make adjustments as deemed necessary to ensure the quality and success of the project.



*Image intended for marketing purposes only.

PEYLAA Phuket, Autograph Collection Residences

Master Plan

-  1 BR : 45 sq. m.
-  2 BR Type C : 83 sq. m.
-  2 BR Type M : 83 sq. m.
-  2 BR Type CF : 86 sq. m.



INFORMATION

Project Highlights

The First Autograph Collection Residences in Asia Pacific

- The first branded residences in Phuket managed by Marriott International
- Exclusive owner benefits through ONVIA, Marriott International's fully integrated and comprehensive owner recognition platform
- Elevated Marriott Bonvoy Gold Elite status for eligible residence owners through 2029

Prime Location

- 30 minutes from Phuket International Airport
- Quiet yet walkable to Boat Avenue
- 1.9 KM from Bang Tao Beach
- Part of a mixed-use development with an Autograph Collection Hotel and retail spaces

Beyond the Ordinary

- International-standard fire safety systems with 24/7 monitoring
- High acoustic-standard, sound-insulated walls between units and corridors
- UV water purification and automated leak detection

Exceptional Service

- Premium concierge services with multiple à la carte options
- Professional staff with full back-of-house facilities for seamless living
- All-day dining with in-residence kitchen catering**

Effortless Living

- Fully furnished with premium furniture and finishes
- Expansive private balconies extend the living space, blending indoor comfort with Phuket's tropical surroundings
- Well-equipped kitchens and bathrooms, featuring large pantries, dishwashers, bathtubs, and high-quality appliances

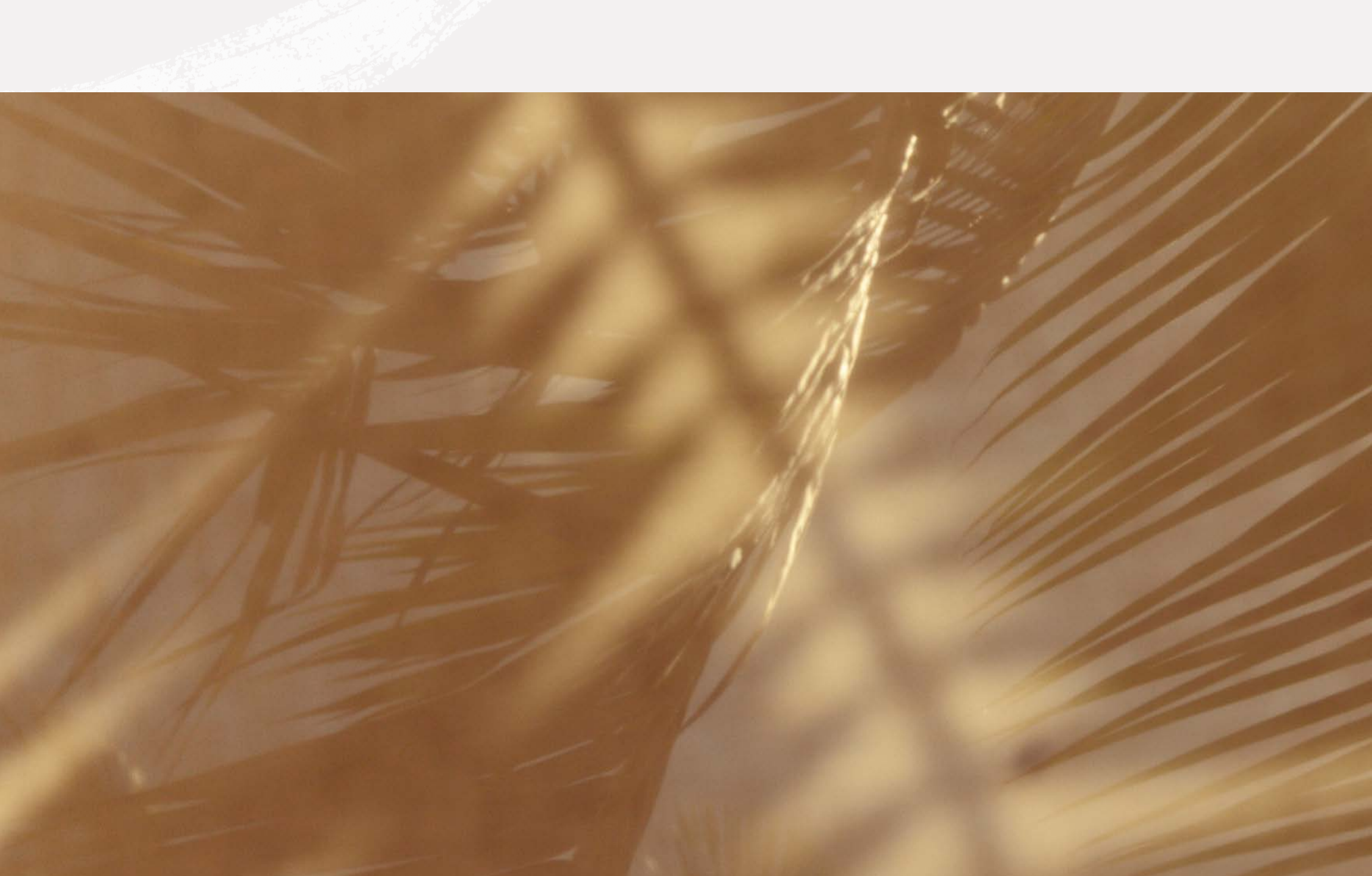
- Premium digital door locks integrated with the property management system
- Thoughtfully designed master switch and integrated USB charging ports

**Select facilities are envisioned to be managed by Autograph Collection Hotel, expected to open in 2030.

PEYLAA Phuket, Autograph Collection Residences









INFORMATION

Amenities Designed For Real Living

Enjoy amenities that cater to all lifestyles—whether you're pursuing an active lifestyle, balancing work and family, or thriving as a remote worker. Here, every detail is designed to enhance the way you live, work, and play.

PEYLAA Phuket, Autograph Collection Residences





INFORMATION

Services and Amenities



Resident Services

- Concierge Services
- Shuttle Service
- Delivery Coordination
- À La Carte Household & Engineering Services*



Community Amenities

- Playground
- Kid's Pool
- Kid's Club
- Sunken Seat Area
- Jacuzzi Pool
- Community Function Hall
- Flexi Workspace
- All-Day Dining***
- Residential Lounge
- Recreation Room**
- Rooftop Barbecue Area With Outdoor Seating



Active Lifestyle Amenities

- Ice Bath
- Sauna
- Yoga Studio
- Tennis Court / Pickle Ball
- Three 25-Meter Swimming Pools**
- Outdoor Fitness Area With Bar Workout Facilities
- State-of-the Art Fitness Centre
- Jogging Track

*À La Carte Services may be arranged by the concierge team, and are typically provided by third parties not affiliated with Autograph Residences.


**Certain facilities are planned for Phase 2 of the development and may be subject to change. The developer reserves the right to adjust the scope and timeline as necessary.

***Select facilities are envisioned to be managed by Autograph Collection Hotel, expected to open in 2030.





Where Refined Living flows
with Coastal Grace



Create unforgettable memories in Bang Tao's social sanctuary
where cultural connection meets moments of calm.
Settle into modern residences, thoughtfully designed for true comfort.
Welcome to a coastal enclave of mindful living—a home that can both
relax and energize mind, body, and spirit.

Here, everyday moments matters.

RESIDENCE TYPE

One-Bedroom 45 sq. m.

Discover the perfect blend of style and functionality in this fully furnished one-bedroom unit, offering 45 sq. m. of well-designed space. Elegantly decorated in a modern tropical style, this residence is crafted for both comfort and practicality, featuring:

- 1 L-shaped pantry, thoughtfully designed for real-life convenience.
- 2 Dining area with a sleek four-seater table, perfect for hosting.
- 3 A 2.4-meter-long sofa for ultimate relaxation.
- 4 A spacious 1.8-meter-deep balcony, seamlessly connected to the living room through floor-to-ceiling glass doors, allowing for an effortless indoor-outdoor lifestyle.
- 5 A king-size bed, ensuring restful nights in a serene environment.
- 6 Floor-to-ceiling bedroom windows, inviting in an abundance of natural light.
- 7 Glass-enclosed closet cabinet, adding a touch of sophistication to the space.
- 8 A 1.2-meter square bathtub ideal for indulging in luxurious soaks.

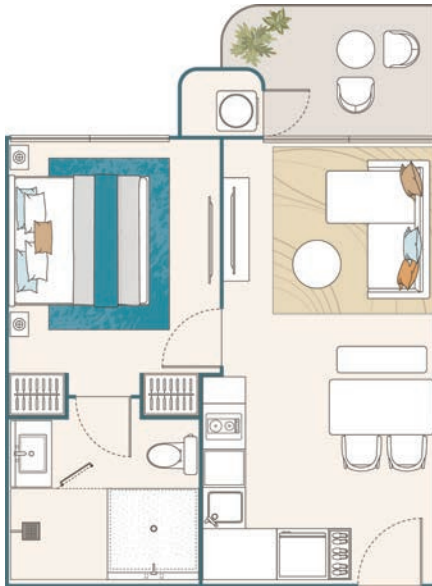




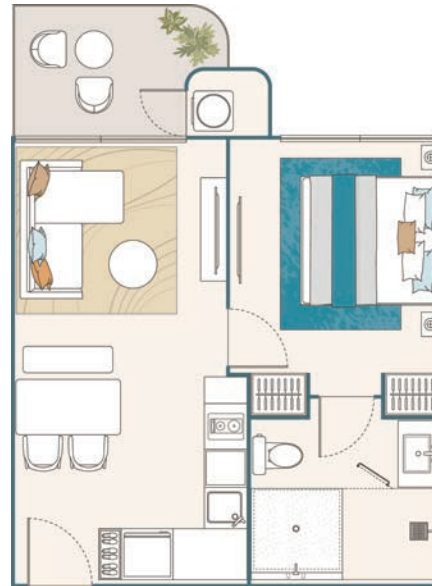
RESIDENCE TYPE

One-Bedroom Variations

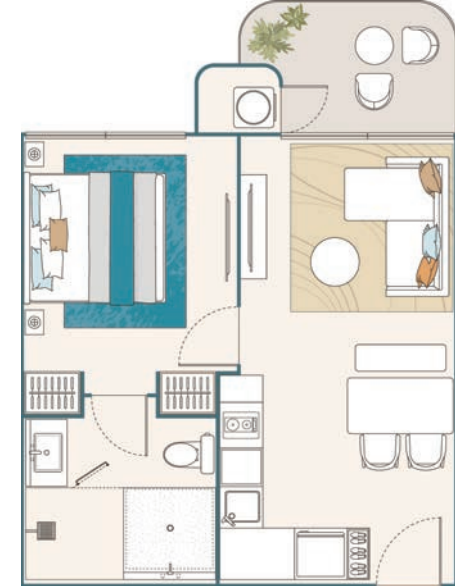
1B-A



1B-B



1B-C



One-Bedroom Furniture Package

Illustrations of unit plans are provided for reference only.
Final details may vary subject to minor design adjustments.

PEYLAA Phuket, Autograph Collection Residences

- Dining Table
- Dining Chair
- Dining Decorative Panel
- Tableware Set
- Kitchenware Set
- Coffee Table

- Sofa Set
- Decorated Cushion
- Floor Rug
- Wall Art
- TV Decorative Panel
- TV Cabinet



Artist Impression Images. Subject to change.

- Double-Layered Curtains
- Bed
- Bed Decorative Panel
- Side Table
- Bedding Set
- Stool
- Outdoor Coffee Table
- Smart TV
- Refrigerator
- Microwave
- Toaster
- Hot Water Boiler
- Washing Machine
- Dish Washing Machine
- Balcony Chair





Artist Impression Images. Subject to change.

RESIDENCE TYPE

Two-Bedroom 83 sq. m. (Corner Unit)

Discover the perfect blend of style, space, and functionality in this fully furnished two-bedroom unit, designed to enhance your lifestyle with 83 sq. m. of thoughtfully crafted living space. Elegantly decorated in a modern tropical style, this residence offers a harmonious balance of comfort and sophistication, featuring:

- 1 L-shaped pantry, designed for effortless cooking and convenience.
- 2 A six-seater dining table, ideal for family gatherings and entertaining guests.
- 3 Floor-to-ceiling glass windows in the living room, seamlessly connecting to the balcony.
- 4 A spacious balcony measuring 1.5 meters in depth and 3 meters in width, perfect for relaxing outdoors.
- 5 Master bedroom with a king-size bed, a spacious closet with a glass-door cabinet, and a well-lit powder table.
- 6 Floor-to-ceiling windows in every bedroom, filling the spaces with abundant natural light.
- 7 A luxurious 1.6-meter bathtub in the master bathroom, framed by floor-to-ceiling windows.
- 8 Second bedroom with a queen-size bed and an ensuite bathroom, which doubles as a stylish powder room for guests.





Artist Impression Images. Subject to change.

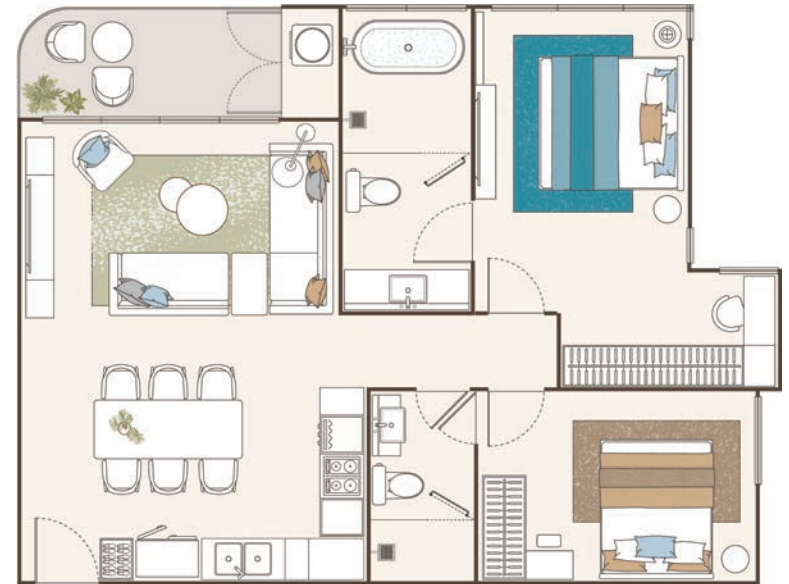
RESIDENCE TYPE

Two-Bedroom Variations

2B-CA



2B-CB



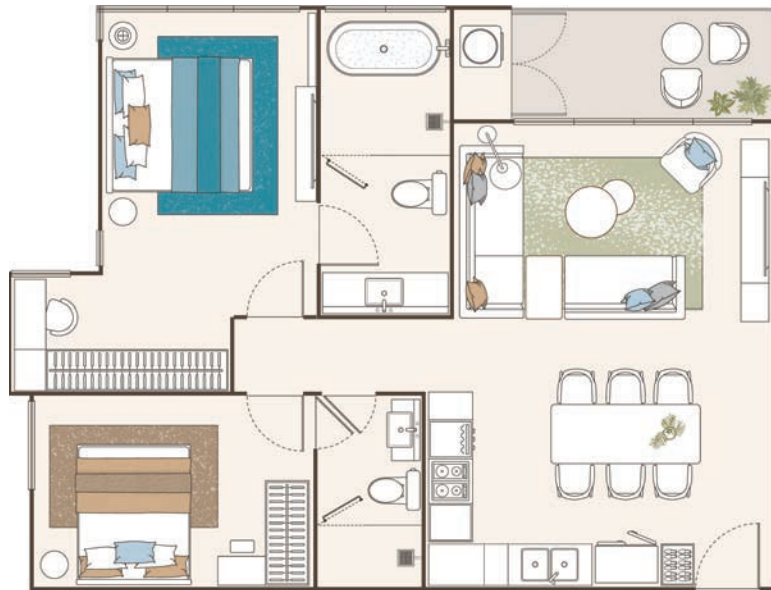
Two-Bedroom Furniture Package

Illustrations of unit plans are provided for reference only.
Final details may vary subject to minor design adjustments.

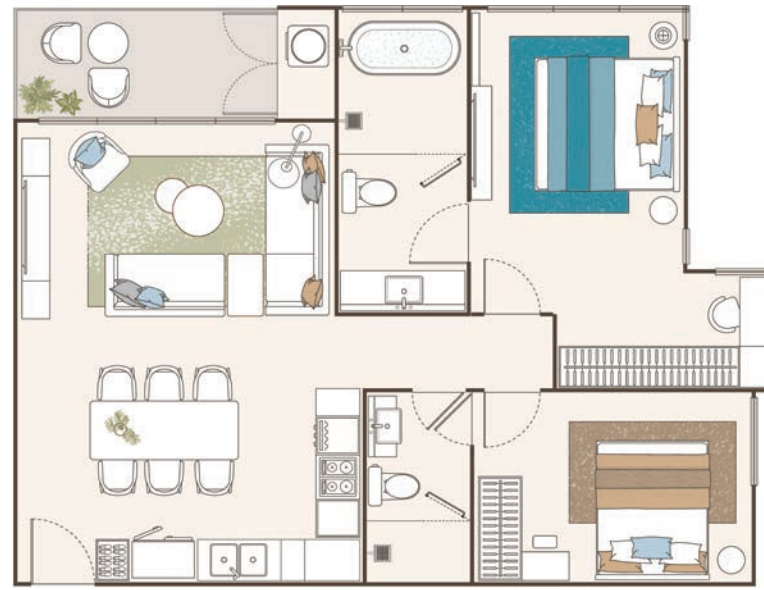
PEYLAA Phuket, Autograph Collection Residences

- Dining Table
- Dining Chair
- Dining Decorative Panel
- Tableware Set
- Kitchenware Set
- Coffee Table
- Sofa Set
- Decorated Cushion
- Floor Rug
- Wall Art
- TV Decorative Panel
- Double-Layered Curtains

2B-CC



2B-CD



- Bed
- Bed Decorative Panel
- Side Table
- Bedding Set
- Stool
- Mirror

- Outdoor Coffee Table
- Smart TV
- Refrigerator
- Built-in Microwave
- Built-in Oven
- Toaster

- Hot Water Boiler
- Washing Machine
- Dish Washing Machine
- Balcony Chair





Artist Impression Images. Subject to change.

RESIDENCE TYPE

Two-Bedroom 83 sq. m. (Middle Unit)

Experience the elegance and comfort of this thoughtfully designed two-bedroom unit, where style meets practicality. This spacious layout ensures both privacy and sophistication, featuring:

- 1 A generous dining area with a six-seater table and a spacious living area centrally positioned for optimal privacy between both bedrooms.
- 2 A private balcony measuring 1.5 meters in depth and 3.95 meters in length, perfect for relaxation and fresh air.
- 3 Floor-to-ceiling windows in every room for natural light and openness.
- 4 King-size bed with a freestanding bathtub offering scenic views.
- 5 Queen-size bed with an ensuite bathroom, that doubles as a guest powder room.





RESIDENCE TYPE

Two-Bedroom Variations

2B-MA



2B-MB



Two-Bedroom Furniture Package

Illustrations of unit plans are provided for reference only.
Final details may vary subject to minor design adjustments.

PEYLAA Phuket, Autograph Collection Residences

- Dining Table
- Dining Chair
- Dining Decorative Panel
- Tableware Set
- Kitchenware Set
- Coffee Table
- Sofa Set
- Decorated Cushion
- Floor Rug
- Wall Art
- TV Decorative Panel
- Double-Layered Curtains

2B-MC



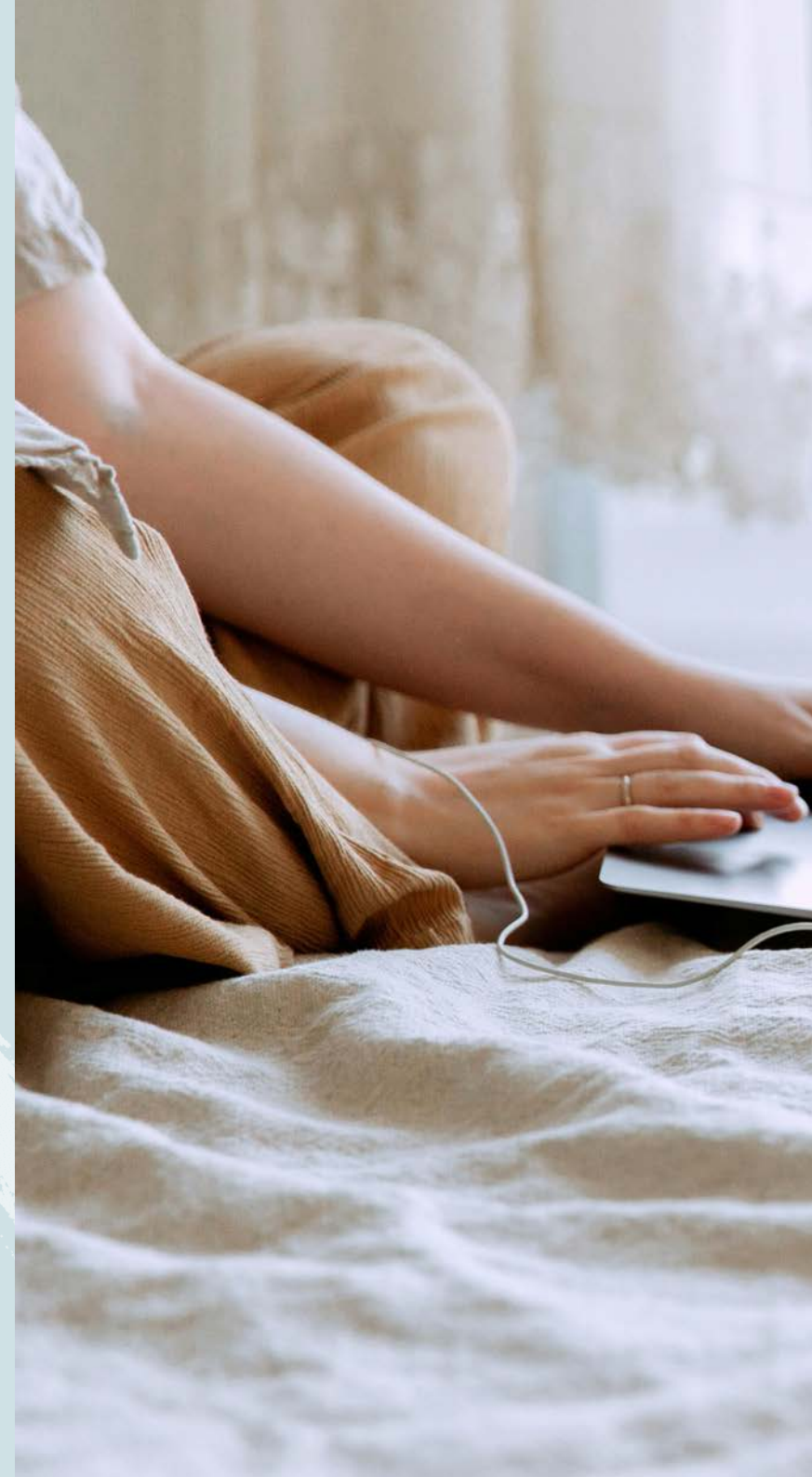
- Bed
- Bed Decorative Panel
- Side Table
- Bedding Set
- Stool
- Mirror
- Outdoor Coffee Table
- Smart TV
- Refrigerator
- Built-in Microwave
- Built-in Oven
- Toaster
- Hot Water Boiler
- Washing Machine
- Dish Washing Machine
- Balcony Chair

RESIDENCE TYPE

Two-Bedroom 86 sq. m.

Experience the perfect blend of style, comfort, and functionality in this fully furnished two-bedroom unit. Spanning 86 sq. m., this thoughtfully designed space is bathed in natural light creating an airy and inviting atmosphere, featuring:

- 1 Floor-to-ceiling glass walls on two sides bring in abundant natural light.
- 2 Luxury island kitchen with a six-seater dining table, perfect for hosting.
- 3 5-meter-long space overlooking a tranquil garden view.
- 4 Floor-to-ceiling windows in every room for natural light and openness.
- 5 King-size bed with a freestanding bathtub offering scenic views.
- 6 Queen-size bed with an ensuite bathroom, that doubles as a guest powder room.





RESIDENCE TYPE

Two-Bedroom Variations

2B-CE



Two-Bedroom Furniture Package

Illustrations of unit plans are provided for reference only.
Final details may vary subject to minor design adjustments.

PEYLAA Phuket, Autograph Collection Residences

- Dining Table
- Dining Chair
- Dining Decorative Panel
- Tableware Set
- Kitchenware Set
- Coffee Table
- Sofa Set
- Decorated Cushion
- Floor Rug
- Wall Art
- TV Decorative Panel
- Double-Layered Curtains

2B-CF



- Bed
- Bed Decorative Panel
- Side Table
- Bedding Set
- Stool
- Mirror
- Outdoor Coffee Table
- Smart TV
- Refrigerator
- Built-in Microwave
- Built-in Oven
- Toaster
- Hot Water Boiler
- Washing Machine
- Dish Washing Machine
- Balcony Chair

RESIDENCE TYPE

Three-Bedroom 129 sq. m.

Designed with flexibility in mind, thoughtfully planned layouts allows for the seamless combination of one-and two-bedroom units into a spacious three-bedroom home—perfect for larger families. Spanning 129 sq. m., this fully furnished residence offers the ideal balance of style, space, and functionality. With generous living areas and elegant design, features:

- 1 Designed for comfort and gatherings, featuring a five-seater sofa, a six-seater dining table, and a dedicated study / workspace.
- 2 Modern L-shaped kitchen equipped with an island with seating, combining style and functionality.
- 3 Spacious balcony extending 6.9 meters in length and 1.8 meters in depth, offering an ideal outdoor retreat.
- 4 Two king-size bedrooms and one queen-size bedroom, ensuring ultimate comfort.
- 5 Each bedroom comes with its own bathroom, providing convenience and privacy.





RESIDENCE TYPE

Three-Bedroom Variations

3B-CA



Three-Bedroom Furniture Package

Illustrations of unit plans are provided for reference only.
Final details may vary subject to minor design adjustments.

PEYLAA Phuket, Autograph Collection Residences

- Dining Table
- Dining Chair
- Dining Decorative Panel
- Tableware Set
- Kitchenware Set
- Coffee Table
- Sofa Set
- Decorated Cushion
- Floor Rug
- Wall Art
- TV Decorative Panel
- TV Cabinet

3B-CB



- Double-Layered Curtains
- Bed
- Bed Decorative Panel
- Side Table
- Bedding Set
- Stool
- Mirror
- Outdoor Coffee Table
- Smart TV
- Refrigerator
- Microwave
- Toaster
- Hot Water Boiler
- Washing Machine
- Dish Washing Machine
- Balcony Chair

ONVIA

OWNER BENEFITS

Ownership With The Extras

Find out more
about ONVIA:



One of the best parts of owning a Marriott Residence is reaping the branded residence benefits of a first-class hospitality operator with an innate understanding of how to make people feel special. World-class amenities and services, a dedicated team that ensures a deep understanding of your needs, and VIP benefits through ONVIA, a fully integrated and comprehensive owner recognition platform, all await Owners of private residential homes.



Developer & Partners

Developer

capstone
asset

Capstone Asset is a leading lifestyle developer creating timeless destinations that enrich communities and inspire modern living.

We specialize in ground-up developments and strategic value-add investments across Thailand's gateway cities, delivering residences, hospitality, and commercial projects that seamlessly blend design, comfort, and lifestyle.

With a proven track record of more than THB 13 billion (USD 380 million) in completed developments, every project by Capstone Asset has been fully sold and delivered. Our reputation as a luxury lifestyle developer known for iconic projects reflects not only the quality of our work, but also the trust and confidence of our discerning buyers.

For more information, please visit our website:
www.capstone-asset.com





Gensler

Branding Consultant

TOPO.LA DESIGN
A STRONG SENSE OF PLACE

Landscape Designer

make\scene

Architect &
Interior Designer

Tri-Arc Enterprises

Facility Designer & Consultant

Light Wise & Associates

Lighting Designer







PEYLAA

PHUKET

AUTOGRAPH COLLECTION®
RESIDENCES

+66 65 945 2499 | @peylaaaphuket | peylaa-phuket.com

capstone
asset

Exclusively
Marketed by **CBRE**

PEYLAA Phuket, Autograph Collection Residences is not owned, developed, promoted or sold by Marriott International, Inc. or its affiliates ("Marriott"). Capstone Asset Phuket Cherngtalay Co., Ltd. uses the Autograph Collection trademarks and trade names under a license from Marriott, which has not confirmed the accuracy of any of the statements or representations made herein. If this license is terminated or expires without renewal, the residential project will no longer be associated with or have any right to use, the Autograph Collection brand, trade names or trademarks. PEYLAA Phuket, Autograph Collection Residences (hereinafter referred to as "the Project") is developed by Capstone Asset Phuket Cherngtalay Co., Ltd. (CAPC), with its head office located at 546 Canvas Ploenchit Building, Ploenchit Road, Lumpini Subdistrict, Patum Wan District, Bangkok 10330 Company registration number: 0105566213897. The Project is represented by Mr. Titiwat Kuvijitsuwan, director and authorized project owner. The Project land covers approximately 10-1-94.4 Title deed No. 78165 and 78166. The land and building have been mortgaged to Kasikorn-bank Public Company Ltd. The total land area is subject to change due to land consolidation and subdivision. The Project is located at Moo 4, Pasak-Koktanod Road, Cherngtalay, Thalang, Phuket 83110. The Project will comprise three 7-storey residential condominium buildings with a total of 408 units. The Project has received Environmental Impact Assessment (EIA) approval. The Project is currently obtaining building construction permits. Construction is expected to commence in Q1 2026 and is anticipated to be completed by Q4 2027, after which the Project will be registered as a condominium under the Condominium Act B.E. 2522 of Thailand. Unit owners shall be responsible for contributions to the sinking fund, common area fees, taxes, and other expenses as determined by the Project or the Condominium Juristic Person in accordance with applicable laws. Advertising images are for illustrative purposes only and may not reflect the final design or specifications. The Project reserves the right to make changes to the information provided without prior notice.